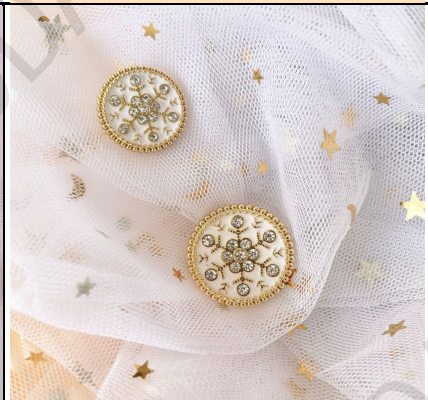
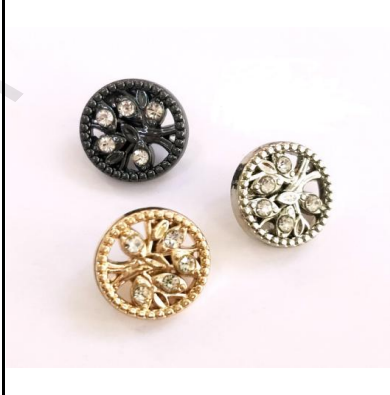
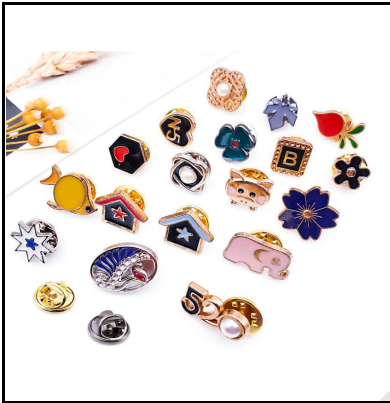
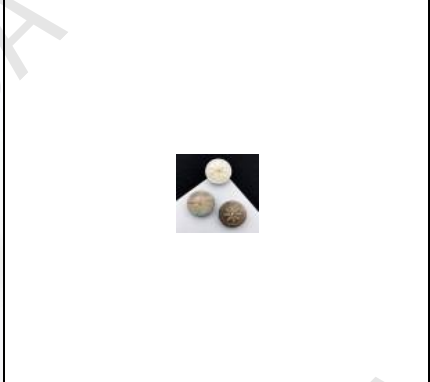


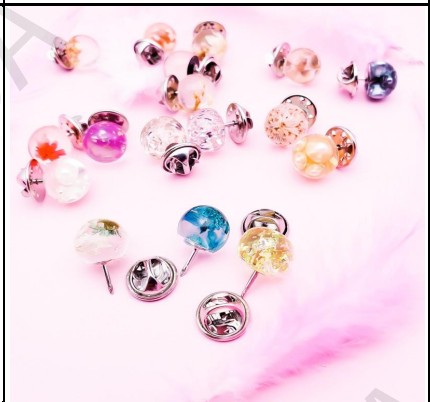
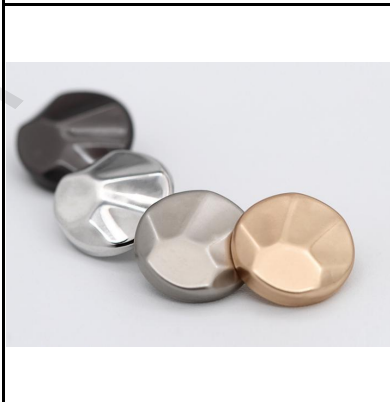
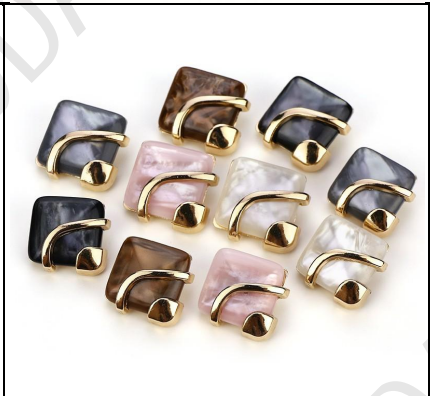
UM MODA-WELLING DENG

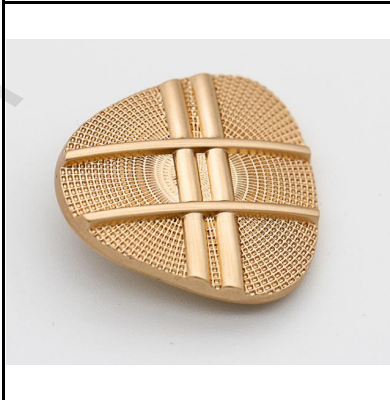
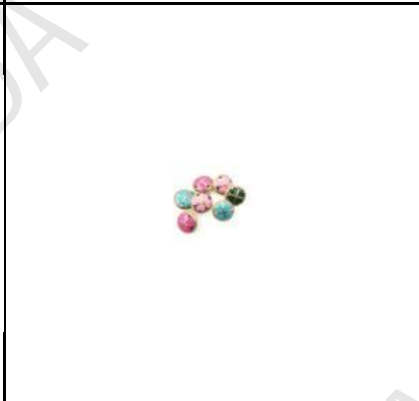


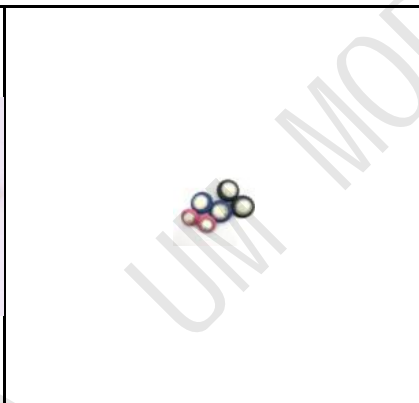
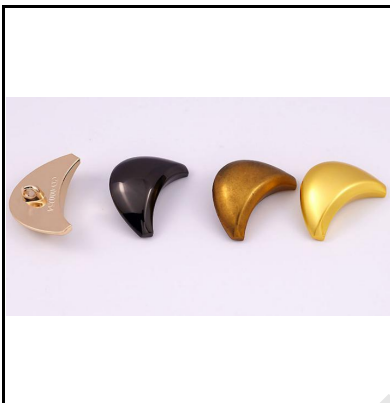


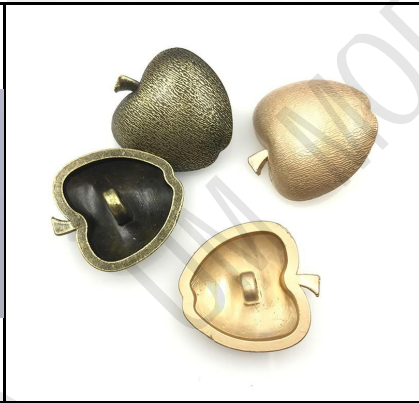


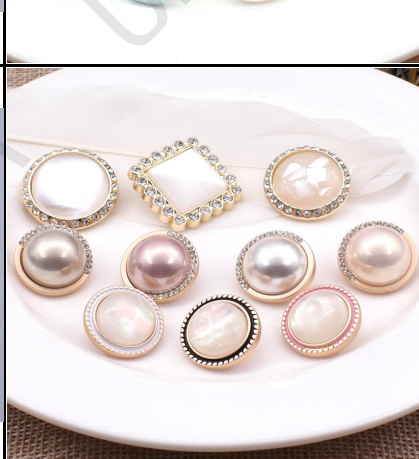
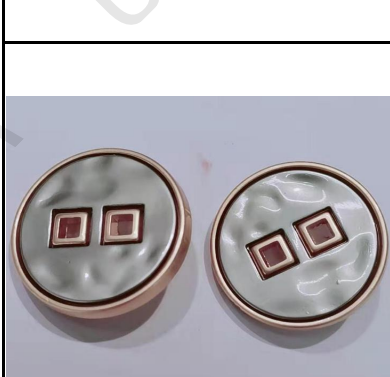
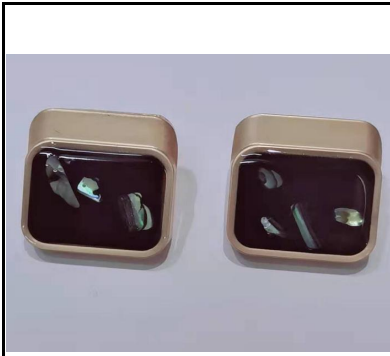


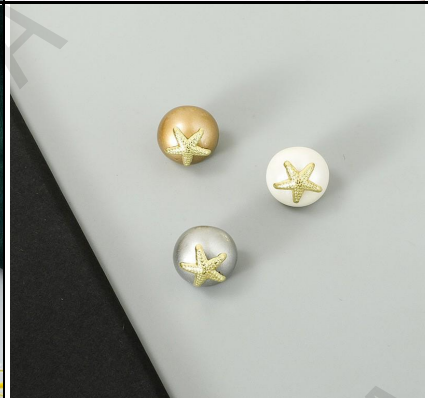


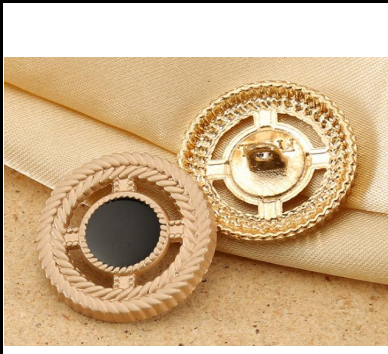


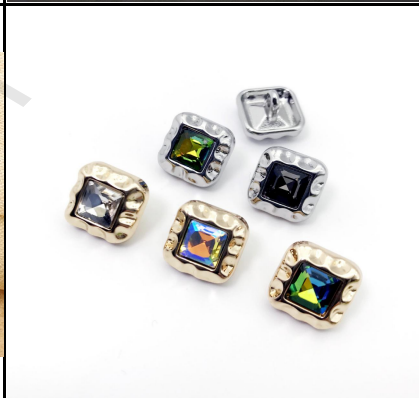
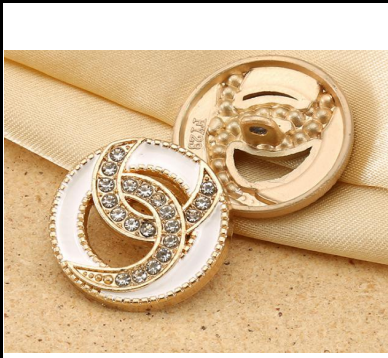


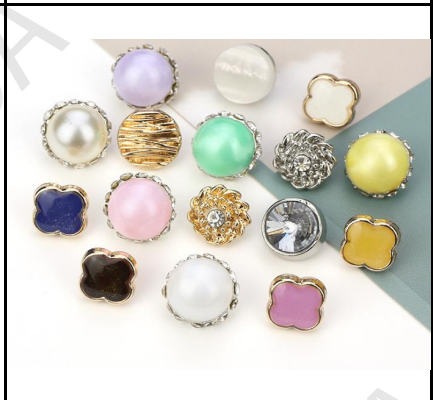
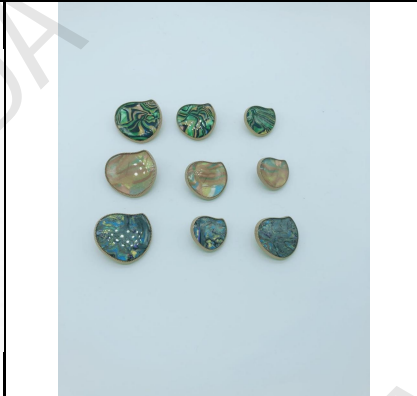


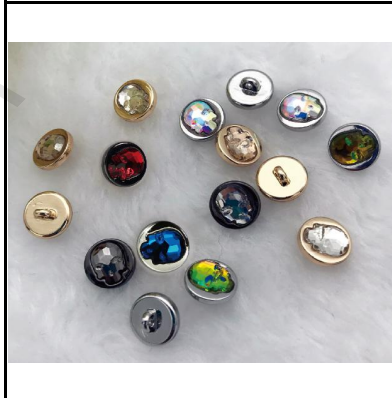
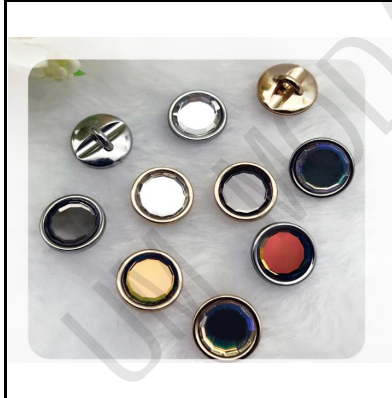


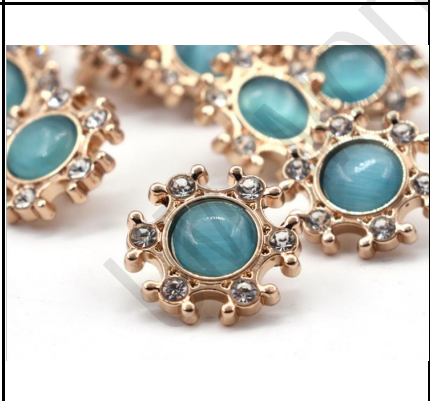
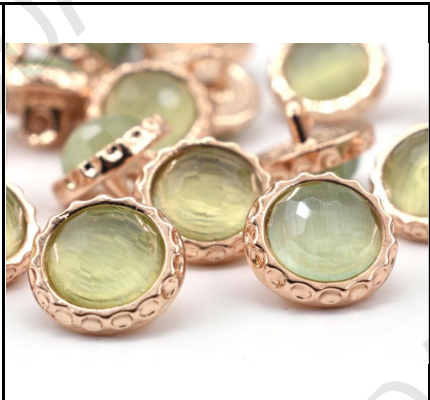




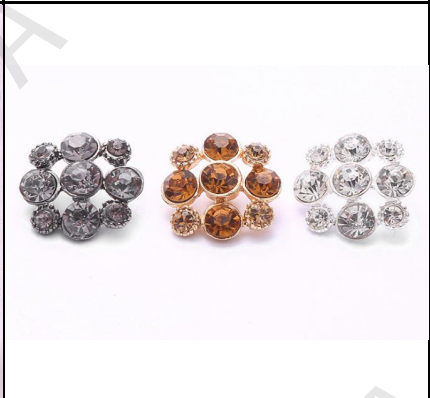


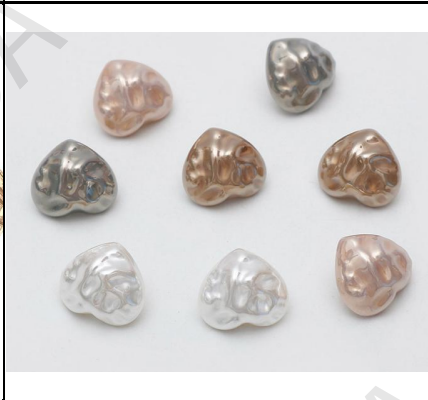
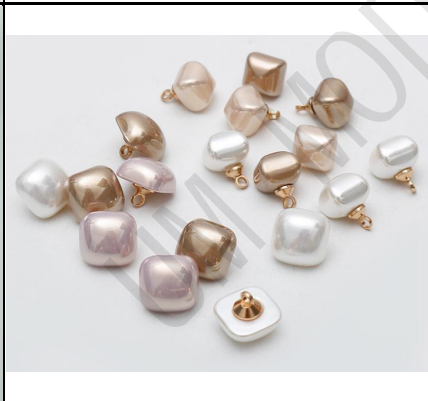
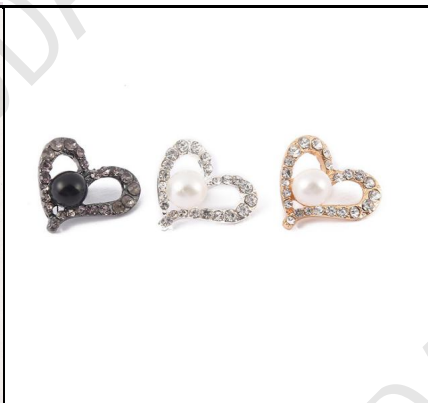












 <p>Seven heart-shaped jewelry pieces, possibly earrings or pendants, arranged on a white surface. Each piece features a central heart in a different color (gold, red, blue, black, pink, white, and gold) surrounded by a border of small, clear stones. A small tag with the text "SADK SADCI" is visible in the background.</p>	 <p>Six round, smooth, colorful beads or pendants arranged on a white surface. The colors include light green, orange, light blue, purple, pink, and white. Each bead has a small gold-colored metal cap or stud on its top.</p>	 <p>Eight triangular, smooth, colorful beads or pendants arranged on a white surface. The colors include light blue, purple, light blue, pink, yellow, and purple. Each bead has a small metal cap or stud on its top.</p>

--	--	--